

Karibu Community Homes



COMMUNITY E-NEWSLETTER

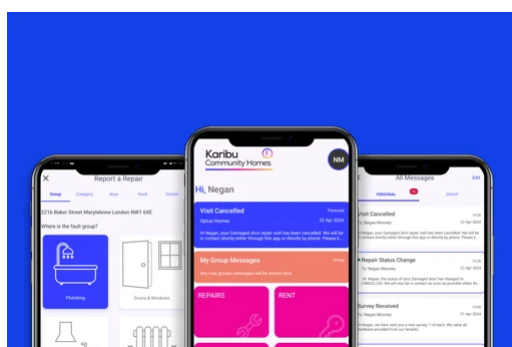
JUNE 2024



Karibu Community Homes merger update

As we continue to integrate into Karibu Community Homes, we're making significant strides in uniting our services, systems, and data under one roof. Our priority is to ensure a seamless transition with minimal disruption to our residents.

[Read more](#)



New 'My Karibu App' will be rolled out soon

We're pleased to announce that we are developing our brand new app, **My Karibu**, which replaces the **My Inquilab**. The app will be rolled out in phases to all our residents.

[Read more](#)



Shaping the future of Karibu Community Homes

We're excited to share our goals for 2024-27, which outlines our strategic vision for the next 3 years.

[Read more](#)



Positive changes: A new era for repairs and maintenance

After a thorough process, we are pleased to announce that we have a new repairs and maintenance contractor.

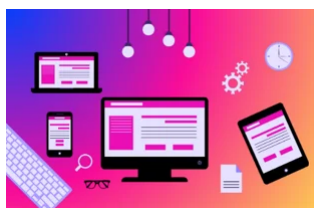
[Read more](#)



Help us choose your new cleaning and grounds maintenance contractor

We want to improve the look and feel of our blocks and neighbourhoods, and here is your chance to become a local Neighbourhood Champion!

[Read more](#)



Building the new Karibu website: Together!

We're thrilled to announce that we're working on a brand-new website to better serve our valued residents and we want your valuable feedback. You can find the survey link by clicking the button below.

[Read more](#)



Kensal road office closing on July 19th, 2024

This important information is for our former Westway residents, who are now Karibu residents since the merger took place on 1st April 2024.

[Read more](#)



Revised complaints policy and process

It reflects the new Housing Ombudsman code, making it clearer how to file a complaint, what's covered, and how long it takes to resolve.

[Read more](#)



Landline changes in 2025: What you need to know

Are you aware that the UK's landline network is undergoing a significant upgrade? This means the way you make and receive landline calls will be changing by December 2025.

[Read more](#)



Foodbank branches and timings across boroughs

In our commitment to supporting the local community, we're pleased to share information about local foodbank branches near you and their opening times on our website.

[Read more](#)



Events in your local communities

Looking for something to do? We've curated a selection of events across boroughs of West London on our website just for you! Discover new experiences or use this opportunity to make new friends in your community.

[Read more](#)

Karibu Community Homes, Unit 3, 8 Kew Bridge Road, Brentford, London, England TW8
0FJ, United Kingdom, 02086077777

[Unsubscribe](#) [Manage preferences](#)

Follow us on Social Media

